

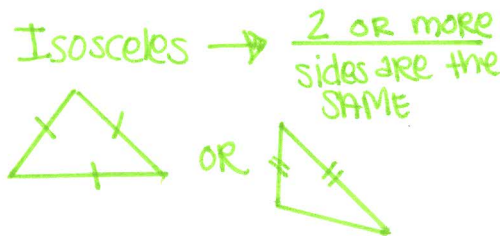
4-1 Classifying Triangles

I. Classify (Name what kind) Triangles

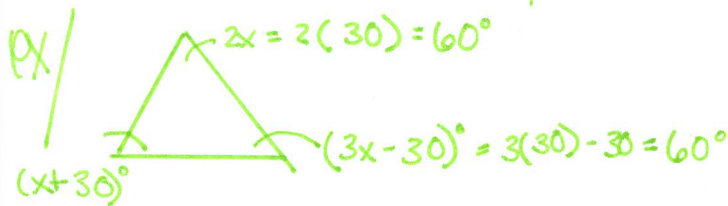
by angles

OR

by sides



(No sides same)
all angles are acute & different



Classify the Δ

$$2x + 3x - 30 + 30 = 180$$

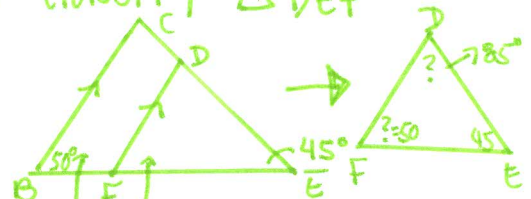
$$6x + 0 = 180$$

$$6x = 180$$

$$x = 30$$

equilateral & isosceles \leftarrow by sides
equiangular & acute \leftarrow by angles

ex/ Classify ΔDEF



SAME // linear!

$$\begin{array}{r} 50 \\ + 45 \\ \hline 95 \end{array} \quad \begin{array}{r} 180 \\ - 95 \\ \hline 85 \end{array}$$

Acute & scalene
(angles) (sides)