

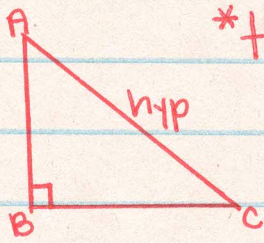
# 8-2 Setting Up for Trig

## I. Trigonometry

A. used to find sides or angles ON Right Triangles

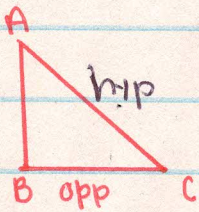
B. things you need to be able to do...

1. Label sides by angle relationships

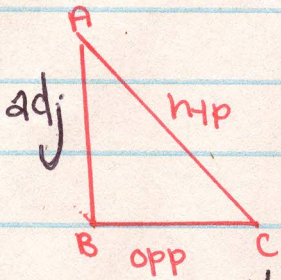


\* Hypotenuse (hyp)  
across from 90°

problem:  
"for  $\angle A$ "

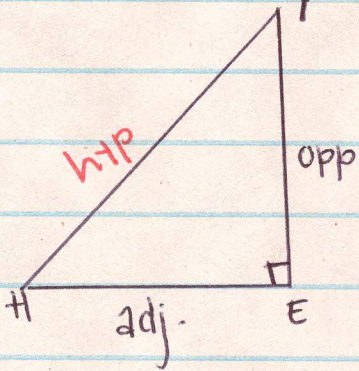


\* opposite (from  $\angle$ )  
across from the angle  
(opp)



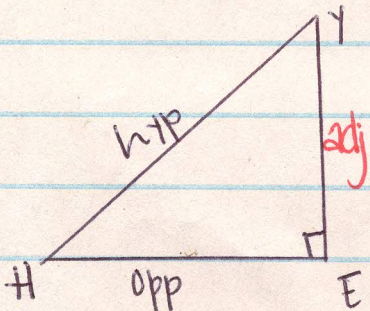
\* Adjacent (adj)  
the left over.

px.



Label the sides for Trig  
using  $\angle H$   
(hyp, opp, adj)

px.



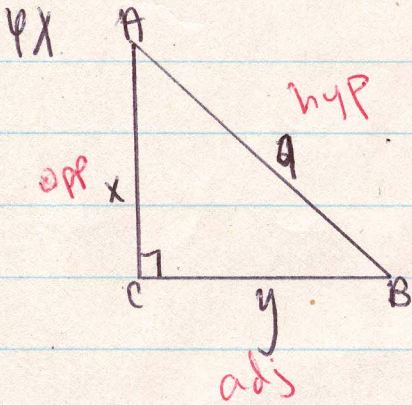
Label the sides for trig  
using  $\angle Y$



RULE: YOU CANNOT  
Label using  
THE RIGHT ANGLE !!!

2. create fractions

$$\frac{\text{opp}}{\text{hyp}} \quad \& \quad \frac{\text{adj}}{\text{hyp}} \quad \& \quad \frac{\text{opp}}{\text{adj}}$$



(use  $\angle B$ )

$$\text{create : } \frac{\text{adj}}{\text{hyp}}$$

$$\frac{\text{adj}}{\text{hyp}} = \frac{y}{9}$$